

Almond Board of California - Disease Forecasts in cooperation with the University of California

Table 1. Daily risk assessment disease forecasts for Thursday, June 9 through Wednesday, June 15, 2022*

No.	County	Region	Anthraco ⁿ ose (date, value, level), 5-day index summary (risk) [^]	Bacterial spot (date, value, level), 7-day index summary (risk) [^]	Alternaria leaf spot (date, value, level), 7-day index summary (risk) [^]
1	Butte	West	6-12 (12.84), High risk; 5-day index 12.84 increasing	6-12 (0.45), Low risk; 7-day index 0.45	6-11 (1) Low risk; 7-day index = 1 holding
2	Colusa	East	6-09 (0.3) Low risk; 5-day index decreasing	0, Low risk; 7-day index = decreasing	0, Low risk; 7-day index = decreasing
3	Fresno	Central	0	0	0
4	Fresno	East	0	0	0
5	Fresno	West	0	0	0
6	Kern	Central	0	0	6-09 (1), Low risk; 7-day index decreasing from 5 to 1
7	Kern	East	0	0	0
8	Kern	West	6-09 (12.77), High risk; 5-day index 12.77, increasing	6-09 (0.04), Low risk; 7-day index decreasing from 5 to 1	0
9	Madera	Central	0	0	0
10	Merced	Central	0	0	0
11	Stanislaus	Central	0	0	0
12	Stanislaus	East	0	6-11 (1) Low risk; 7-day index decreasing	6-11 (1) Low risk; 7-day index increasing from 1 to 2
13	Stanislaus	West	0	0	0

* - 5- and 7-day forecasts are based on temperature (inside- and outside-canopy measurements), precipitation, and leaf wetness which are powered by the Semios[®] precision farming platform.

[^] - Numerical risk is scaled as follows: 0 = no risk, 1 = action threshold (Note: values may exceed 1 due to hourly accumulations).

Note: In this updated table, the order of some regions was changed from previous reports to match the RADAR on-line report and to minimize errors in the summary table.

Industry Advisory - Summary for Selected Almond Growing Regions

For the coming week, zero to low risk is forecasted for Alternaria leaf spot and bacterial spot in all regions (Table 1). Anthracnose is forecasted with a high risk in Butte-W and Kern-W with accumulated risk at 12.84 on 6-12 and 12.77 on 6-09 due to forecasted precipitation (1.17 mm and 0.32 mm, respectively); whereas Colusa-E is at low risk (0.3) with 2 h of accumulated leaf wetness on 6-11 and no precipitation. Any chance of precipitation with warm temperatures is indicating high risk in the models to warn against anthracnose. Unless higher precipitation occurs in a short period of time, this forecast is more of a “be on your guard” or warning. All other regions have 0 risk for anthracnose.

Overall, the forecasts are subjected to the amount and duration of precipitation (leading to leaf wetness) and realized temperatures. Forecasted temperatures are starting to warm up (22.0 to 34.4 C) in all regions for the next week. Low precipitation is only forecasted for Butte-W and Kern-W for the coming week and this triggered the anthracnose high risk alert that is precautionary. Overall, disease pressure will be low for most almond growing regions of the state (Table 2).

The website <https://www.ag-radar.com> (password: Almondboard2022) displays actual and forecasted disease risk assessments for each region. Because these are regional forecasts, precipitation may vary with region and differ for the forecasted rainfall. Please check <https://www.ag-radar.com> for up to date daily forecasts. Historical records and experience for specific locations should be considered. This advisory will be updated weekly.

"2022 Fungicide Efficacy Tables" were posted at <http://ipm.ucanr.edu/PDF/PMG/fungicideefficacytiming.pdf> on 3-21-22 and at <https://cfn-fungicides.ucr.edu/efficacy-tables> on 5-1-22.

Note: Maps for all regions listed in Tables 1 and 2 are provided in Figs. 1 to 3.

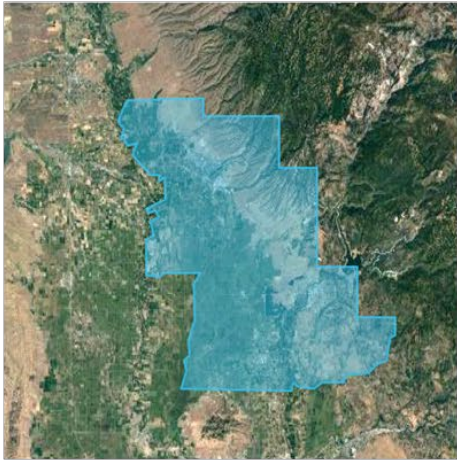
Table 2. Forecasted weather for Thursday, June 9 through Wednesday, June 15, 2022*

No.	County	Region	Date	Avg Temp (in canopy) °C	Avg Humidity (%)	Precip. (mm)	Leaf Wetness (hours/day)
1	Butte	West	6-09 to 6-15	26.1 to 34.4	18.9 to 50.6	1.17 (6-12)	5 h (6-11)
2	Colusa	East	6-09 to 6-15	26.0 to 31.5	19.1 to 48.4	0	2 h (6-11)
3	Fresno	Central	6-09 to 6-15	22.5 to 29.2	20.2 to 50.9	0	0
4	Fresno	East	6-09 to 6-15	22.6 to 29	21.3 to 48.6	0	0
5	Fresno	West	6-09 to 6-15	22.4 to 31.1	16.1 to 39.7	0	0
6	Kern	Central	6-09 to 6-15	21.4 to 28.6	19.6 to 55.5	0	7 h (6-09)
7	Kern	East	6-09 to 6-15	22.1 to 28.9	20.0 to 50.4	0	0
8	Kern	West	6-09 to 6-15	22.0 to 29.9	19.6 to 45.2	0.32 (6-09)	0
9	Madera	Central	6-09 to 6-15	22.0 to 29.5	22.0 to 50.0	0	0
10	Merced	Central	6-09 to 6-15	22.5 to 29.8	21.8 to 52.2	0	0
11	Stanislaus	Central	6-09 to 6-15	22.8 to 29.6	21.9 to 51.3	0	2 h (6-11)
12	Stanislaus	East	6-09 to 6-15	22.5 to 29.4	23.3 to 54.9	0	3, 3, 6, 6 h (6-09 to 6-12)
13	Stanislaus	West	6-09 to 6-15	23.3 to 28.8	18.5 to 48.4	0	0

Note: In this table, the order of regions is the same as Table 1 and was generated using the RADAR on-line forecasted report powered by the Semios® precision farming platform. The ranges of average temperatures, relative humidity values, precipitation, and leaf wetness are not sequential with dates, but the high and low values are within the forecasted week.

Fig. 1. Maps of counties and regions (alphabetically listed).

Butte West



Colusa East



Fresno Central



Fresno East



Fresno West



Fig. 2. Maps of counties and regions (alphabetically listed).

Kern Central



Kern East



Kern West



Madera Central



Fig. 3. Maps of counties and regions (alphabetically listed).

Merced Central



Stanislaus Central



Stanislaus East



Stanislaus West

