

**Almond Board of California - Disease Forecasts in cooperation with the University of California**

**Table 1.** Daily risk assessment disease forecasts for Thursday, Mar. 3 through Wednesday, Mar. 9, 2022\*

No.	County	Region	Anthrac-nose	Brown rot blossom blight	Bacterial blast risk (date, value, level)^	Bacterial spot (date, value, level)	Alternaria leaf spot	Scab
1	Butte	West	0	0	0	0	Starts 4/1	Starts 4/1
2	Colusa	East	0	0	0	0	Starts 4/1	Starts 4/1
3	Fresno	East	0	0	0	0	Starts 4/1	Starts 4/1
4	Fresno	Central	0	0	0	0	Starts 4/1	Starts 4/1
5	Fresno	West	0	0	0	0	Starts 4/1	Starts 4/1
6	Kern	Central	0	0	0	0	Starts 4/1	Starts 4/1
7	Kern	West	0	0	0	0	Starts 4/1	Starts 4/1
8	Kern	East	0	0	0	0	Starts 4/1	Starts 4/1
9	Stanislaus	East	0	0	0	0	Starts 4/1	Starts 4/1
10	Stanislaus	Central	0	0	0	0	Starts 4/1	Starts 4/1
11	Stanislaus	West	0	0	0	0	Starts 4/1	Starts 4/1

\* - 7-day forecasts are based on temperature (inside- and outside-canopy measurements), precipitation, and leaf wetness which are powered by the Semios® precision farming platform.

^ - Numerical risk is scaled as follows: 0 = no risk, 1 = action threshold (Note: values may exceed 1 due to hourly accumulations).

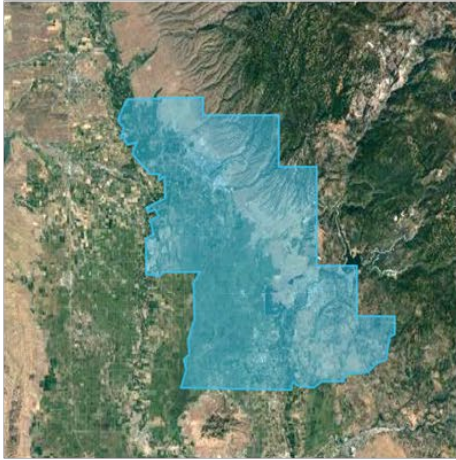
**Industry Advisory - Summary for Selected Almond Growing Regions**

In the next few days, all disease risks shown in Table 1 are very low. Forecasts are based on regional maps shown in Figs. 1,2 that correspond to the counties and regions described in Table 1. The website [www.ag-radar.com](http://www.ag-radar.com) displays actual and forecasted disease risk assessments and regional maps. A password is available on the Almond Board 2022 website. Forecasted precipitations for the following regions for 3-4-22 and 3-5-22 are: Butte-West 0.18 in (4.5 mm); Fresno-Central 0.22 in (6 mm); Fresno-East 0.45 in (11.4); Kern-Central 0.25 (9mm); Kern-East 0.61 in (15.5 mm); and Kern-West 0.12 in (3 mm). Forecasted precipitation for Colusa-East for 3-3-22 is 0.11 in (3 mm). Average daily temperatures for these dates are cool, and prolonged wetness may favor green fruit rot (jacket rot) caused primarily by *Botrytis cinerea* or other fungi. Overall, the risk is low due to low precipitation. Because these are regional forecasts, precipitation may vary with region and differ for the forecasted rainfall. Please check [www.ag-radar.com](http://www.ag-radar.com) for up to date forecasts. Historical records and experience for specific locations should be considered.

This advisory will be updated weekly.

Fig. 1. Maps of counties and regions.

Butte West



Colusa East



Fresno Central



Fresno East



Fresno West



Fig. 2. Maps of counties and regions.

Kern West



Kern East



Kern Central



Stanislaus Central



Stanislaus East



Stanislaus West

