

Almond Board of California - Disease Forecasts in cooperation with the University of California

Table 1. Daily risk assessment disease forecasts for Thursday, Mar. 10 through Wednesday, Mar. 16, 2022*

No.	County	Region	Anthraco ⁿ ose (date, value, level) [^]	Green fruit rot (date, precip., level) [^]	Bacterial blast risk (date, value, level) [^]	Bacterial spot (date, value, level)	Alternaria leaf spot	Scab
1	Butte	West	3-14 to 3-15 (0.2 & 0.7) Low-Mod. risk	3-14 to 3-15 (2.3 to 10 mm) Mod. risk	0	3-14 to 3-15 (0.3 & 1.0) High risk	Starts 4/1	Starts 4/1
2	Colusa	East	3-14 (0.1) Low- risk	3-14 to 3-15 (0.6 to 2.6 mm) Low risk	0	0	Starts 4/1	Starts 4/1
3	Fresno	East	0	0	0	0	Starts 4/1	Starts 4/1
4	Fresno	Central	0	0	0	0	Starts 4/1	Starts 4/1
5	Fresno	West	0	0	0	0	Starts 4/1	Starts 4/1
6	Kern	Central	0	0	0	0	Starts 4/1	Starts 4/1
7	Kern	West	0	0	0	0	Starts 4/1	Starts 4/1
8	Kern	East	0	0	0	0	Starts 4/1	Starts 4/1
9	Stanislaus	East	0	3-15 (3.5 mm) Low risk	0	0	Starts 4/1	Starts 4/1
10	Stanislaus	Central	0	3-15 (2.3 mm) Low risk	0	0	Starts 4/1	Starts 4/1
11	Stanislaus	West	0	3-15 (1 mm) Low risk	0	0	Starts 4/1	Starts 4/1

* - 7-day forecasts are based on temperature (inside- and outside-canopy measurements), precipitation, and leaf wetness which are powered by the Semios[®] precision farming platform.

[^] - Numerical risk is scaled as follows: 0 = no risk, 1 = action threshold (Note: values may exceed 1 due to hourly accumulations).

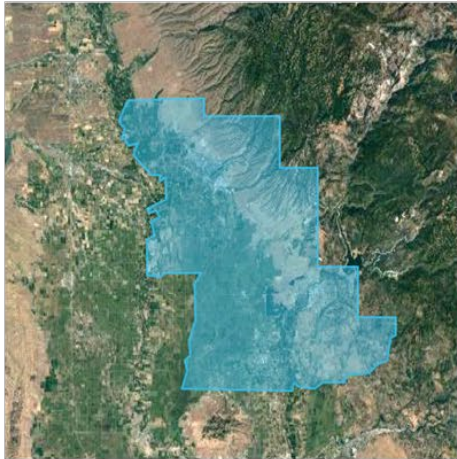
Industry Advisory - Summary for Selected Almond Growing Regions

In the next few days, disease risks shown in Table 1 are low except for bacterial spot (high risk on susceptible cultivars such as Fritz) and anthracnose (moderate risk on susceptible varieties) for Butte West. Forecasts are based on regional maps shown in Figs. 1,2 that correspond to the counties and regions described in Table 1. The www.Ag-Radar.com portal ([found here at Almonds.com with a password](#)) displays actual and forecasted disease risk assessments and regional maps. Average daily temperatures are moderate for Stanislaus Co. (12-13C), Butte and Colusa Co. (15-16C). Thus, prolonged wetness may favor green fruit rot (jacket rot) caused primarily by *Botrytis cinerea* or other fungi. Overall, the risk is low to moderate due to low precipitation. Because these are regional forecasts, precipitation may vary with region and differ for the forecasted rainfall. Please check the www.Ag-Radar.com portal for up to date forecasts. Historical records and experience for specific locations should be considered.

This advisory will be updated weekly.

Fig. 1. Maps of counties and regions.

Butte West



Colusa East



Fresno Central



Fresno East



Fresno West



Fig. 2. Maps of counties and regions.

Kern West



Kern East



Kern Central



Stanislaus Central



Stanislaus East



Stanislaus West

